

# AW CONSTRUCTIONS PVT. LTD.

## COMPLETE DESIGN AND BUILD SOLUTION



PERLUCA KE LUAR NEGARA DAN  
POST POST ALIHAN DAN PULSAHAN

ILHA ANHUTAN & ANHUTAN  
RETT SUPRA LACUTA  
BAY & DRUMBU/TONJAN

HANCIAN GEMELLA  
CONSTRUCTION KAWAN  
KAWAN KAWAN  
KAWAN KAWAN

ELAN UNIKAS GEMELLA  
CONSTRUCTION KAWAN  
KAWAN KAWAN

# TABLE OF CONTENTS

---

**ABOUT  
US**

**WHY  
CHOOSE  
AWC?**

**HOW WE  
WORK?**

**OUR  
TEAM**

**OUR  
PROJECTS**

**CONTACT  
US!**

# — ABOUT US —

## **AWC IS A PREMIER CONSTRUCTION COMPANY BASED IN BHOPAL,**

recognized for its commitment to quality, innovation, and end-to-end project delivery. As a core engineering, procurement, and construction (EPC) firm, we bring together

technical expertise and modern building practices to create structures that stand the test of time.

From initial sketches to fully completed buildings, AWC offers comprehensive design-and-build solutions under one roof, ensuring seamless coordination, faster execution, and complete accountability at every stage. Known as one of the most trusted architectural and construction partners in Bhopal, we deliver projects with precision, reliability, and transparency.

With over two decades of proven experience in the civil construction industry, our team is dedicated to delivering work that meets the highest standards of quality, safety, and functionality. Every project we undertake is driven by thoughtful planning, evaluated processes, and a commitment to excellence, ensuring results that exceed client expectations.



## **PROJECT TYPES WE DELIVER**

AWC specializes in planning, designing, and executing a diverse range of building projects, across all scales, purposes, and architectural complexities. Our expertise covers:

- Row Houses
- Commercial Buildings
- Multi-Storey Apartments
- Industrial Buildings & Facilities
- Hotels & Hospitality Projects
- Hospitals & Healthcare Infrastructure
- Resorts & Recreational Properties
- Farmhouses & Country Homes
- Premium Residential Bungalows
- Corporate Offices & Workspaces

# — WHY CHOOSE AWC? —

- ▶ **COMPLETE END-TO-END SOLUTIONS**
- ▶ **COMPREHENSIVE DRAWINGS BEFORE SITE WORK**
- ▶ **TRANSPARENT & DETAILED ESTIMATES**
- ▶ **STRONG COMMITMENT TO QUALITY & SAFETY**



# — OUR STREAMLINED WORK PROCESS —



## INITIAL MEETING & CONCEPT PLANNING

We begin with an in-person consultation to understand your vision, lifestyle needs, and design preferences. Based on this discussion, our team prepares a tailored concept plan supported by initial project drawings, ensuring the design aligns with your expectations from the very start.



## PROPOSAL & MATERIAL SPECIFICATION

Once the concept is finalized, we present a detailed proposal that fits your budget and scope. This includes a clear breakdown of materials, brands, and product specifications, prioritizing durability, quality, and industry standards so you know exactly what goes into your project.



## MUNICIPAL DRAWINGS & APPROVALS

AWC handles all regulatory requirements by preparing and submitting building plans in compliance with Municipal Corporation and Panchayat guidelines. We coordinate the entire approval process, ensuring you secure the necessary building permissions required to commence construction and pursue bank financing.



## SUBMISSION OF FINAL DRAWINGS FOR AGREEMENT

Before site work begins, we provide a complete set of detailed technical drawings. These documents form the foundation of a transparent, comprehensive project agreement, ensuring both clarity and confidence for our clients.



## CONSTRUCTION EXECUTION & PROJECT MANAGEMENT

This stage transforms your approved drawings into a fully realized structure. Our team ensures that construction meets both functional and aesthetic expectations—efficiently, economically, and within the committed timeline. We maintain strict quality control through regular inspections, testing, documentation, and client coordination, ensuring excellence at every stage of the build.



# Administration Team

**ABDUL WASI**

MD & CEO

**NABEELA SHEIKH**

DIRECTOR



**RAJNEESH CHATURVEDI**

GEN. MGR. CONSTRUCTION



**DK TRIPATHI**

GEN. MGR. PROCUREMENT

**SHEEBA ALEXENDER**

MARKETING MANAGER

**NADIR KHAN**

FINANCE MANAGER

**TALHA SAEED**

CHIEF FINANCIAL OFFICER

# Design Team

**ALI KHAN**

ARCHITECT

**ANSHUL MISHRA**

ARCHITECT

**SAMAD KHAN**

ARCHITECT

**DEEPAK SHERKE**

STRUCTURAL ENGINEER

**SHAHID KHAN**

ARCHITECT

**ANKIT TIWARI**

ARCHITECT

**FAIZAN AHMED**

ARCHITECT

**MOHD ZAID**

STRUCTURAL ENGINEER

**SAJID KHAN**

INTERIOR DESIGNER

# Construction Team

**IRSHAD ALAM**

PROJECT MANAGER

**FAZAL ALI**

SITE ENGINEER

**ANKIT JAISWAL**

SITE ENGINEER

**FAISAL ALI**

CONSTRUCTION COORDINATOR

**NASEEM KHAN**

CIVIL ENGINEER

**SAQULAIN**

SITE ENGINEER

**FARHAN KHAN**

SITE ENGINEER

**LUCKY**

CONSTRUCTION COORDINATOR

**NAUSHAD AHMAD**

SAFETY ENGINEER



# — OUR PROJECTS —

COMMERCIAL / HOSPITAL / MULTI STOREY BUILDINGS

## TECHNO TASK HEAD OFFICE



B07 & B14 IT Park, Bhopal

# COMMERCIAL / HOTEL, NAVRRO GROUP



IT Park, Bhopal

# BUSINESS ARCADE



Vidhya Nagar, Bhopal

# EKSPE SOFTWARE SERVICES LLP



IT Park, Bhopal

# DEEMAAS FUTURE GROUP



IT Park, Bhopal

# SPLASH INDIA



IT Park, Bhopal

# GROW MORE



IT Park, Bhopal

# SAYAJI HOTEL



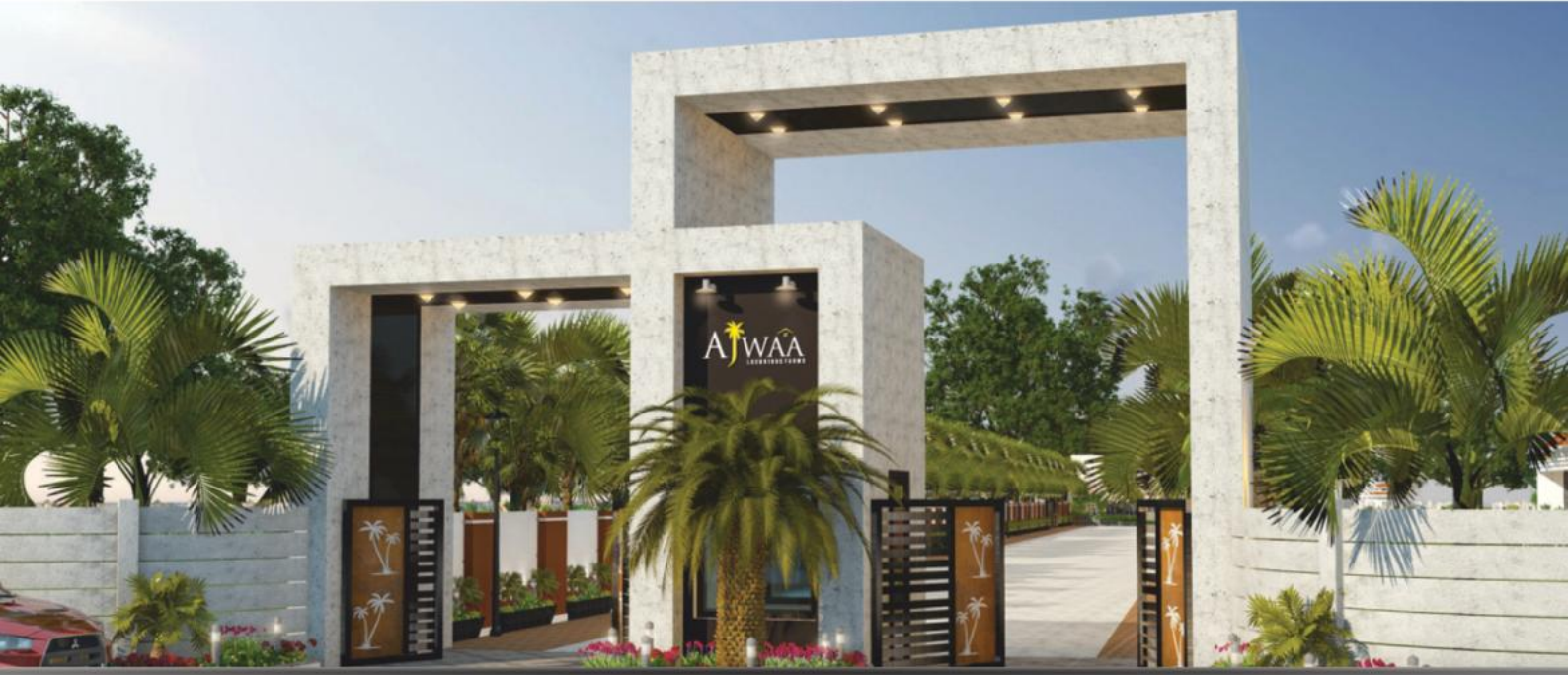
Prempura, Bhopal

# AJWAA RESTAURANT



Sehore Road, Bhopal

# AJWAA LUXURIOUS FARMS



IISER Bhouri, Bhopal

# FOUR SEASON RESORT



Kerwa Dam, Bhopal

# ARYA FARM



Geedhgarh, Bhopal

# AZIM PREMJI UNIVERSITY



Bhopal - Vidisha Bypass Road

# IT BUILDING GREEN LUMINOUS PVT. LTD.



IT Park, Bhopal

# SAFFRON PALACE & MARRIAGE LAWN



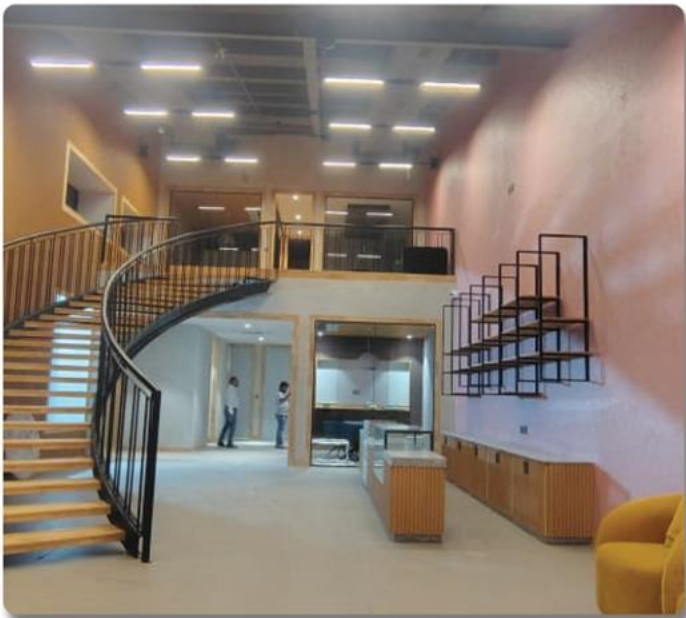
Hoshangabad Road, Bhopal

# NRI COLLEGE



Raisen Road, Bhopal

# MARKETING OFFICE PRIMARC GROUP



New Market Smart City, Bhopal

# ASWAT FARM



Sehore Road,  
Bhopal



# NATURAL FARM



Raisen Road,  
Bhopal

# SHOPPING COMPLEX



Mandideep

**ROW HOUSES / COVERED CAMPUS**

## **ORCHID DUPLEXES**



**The Bellaire, Airport Road, Gandhi Nagar, Bhopal**  
(50 Row Houses)

# OLIVE ENCLAVE ROW HOUSES



Karond, Bhopal



MP Nagar, Bhopal



Peergate, Bhopal



Danish Nagar, Hoshangabad Road Bhopal



Vidya Nagar, Bhopal



Hotel Narmada, Budhni



Royal Market, Bhopal



Royal Market, Bhopal



Koh-e-fiza, Bhopal



# RESIDENTIAL BUNGALOWS/ DUPLEXES



Katara Hills, Bhopal



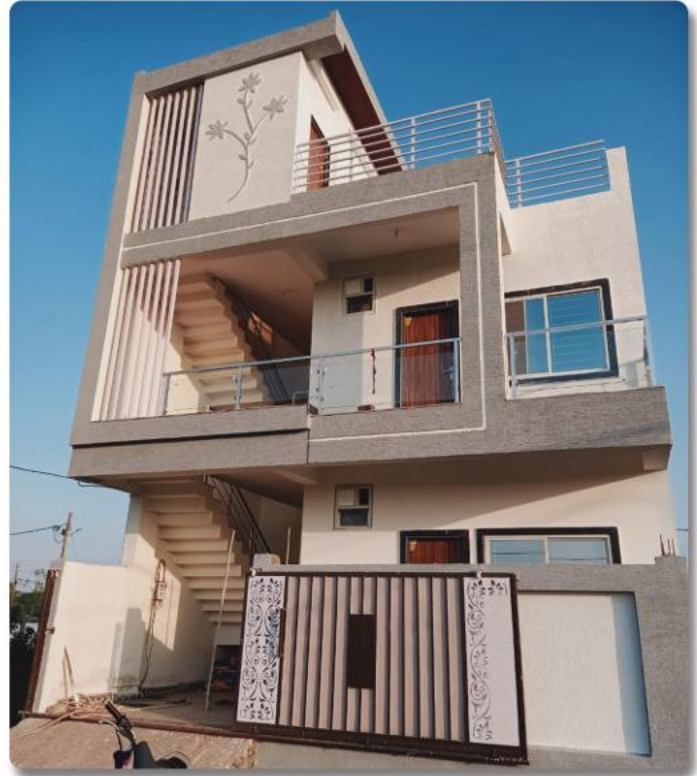
Katara Hills, Bhopal



Arvind Vihar Katara Hills,  
Bhopal



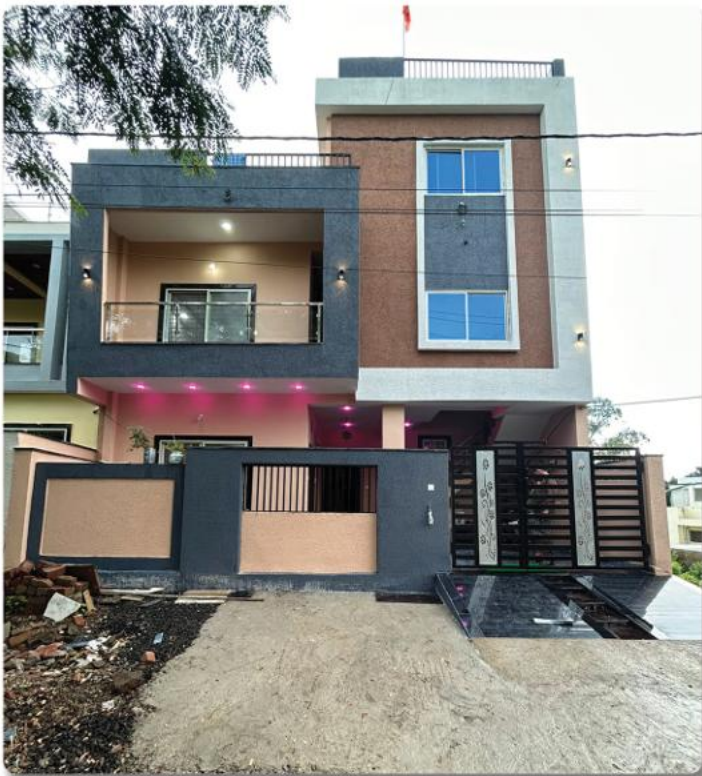
Katara Hills, Bhopal



Jahangirabad, Bhopal



Gandhi Nagar, Bhopal



Arvind Vihar, Near Saket Nagar,  
Bhopal



Saket Nagar, Bhopal



Sanjeev Nagar, Jail Road, Bhopal



Neelbadh



Data Colony Airport Road, Bhopal



Hoshangabad Road, Bhopal



Kasturi City Katara Hills, Bhopal



Kasturi City Katara Hills, Bhopal



**Rameshwaram,  
Near Katara Hills, Bhopal**



**Lotus green,  
Hoshangabad road, Bhopal**



Raksha Vihar, Bhopal by pass



Mubarikpur, Bhopal



Arvind Vihar Katara Hills,  
Bhopal



Patel Nagar, Bhopal



Sage Nirwana, Misrod



Nizamuddin Colony, Bhopal



Awadhपुरi, Bhopal



Airport City, Bhopal



Reliable Hi Tech City



Suyash Fortune Santosa



Salaiya, Bhopal



Krishna Campus, Mubarakpur



Sage Sun Villas, Bhopal



Sage Sun Villas, Bhopal



Airport City, Bhopal



Airport City, Bhopal





Badwai, Airport Road



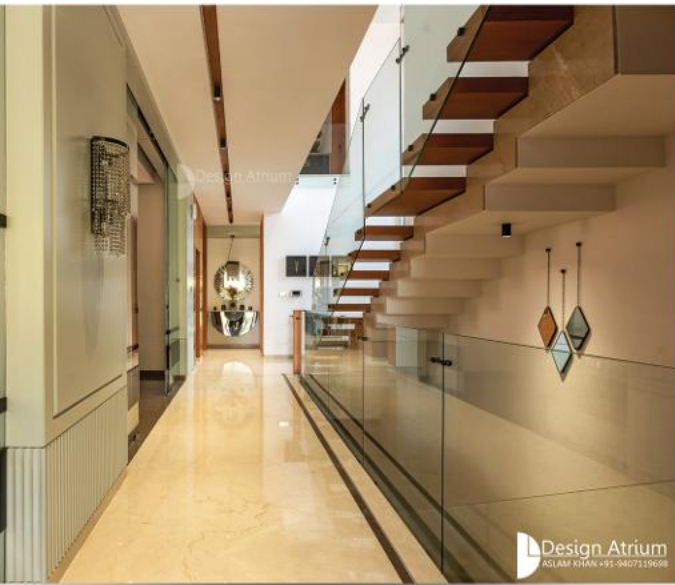
DIG Bungalow, Bhopal



# STRATEGIC DESIGN PARTNER

## AR. ASLAM KHAN | DESIGN ATRIUM







Residence For Mr. Singh At Rewa

Design Atrium  
Architect & Interior Designer  
B. Sankar Rajagopalan  
Phone: 9711 481777, 011 9621114



Residence for Shri Morari ji at Gwalior

Design Atrium  
Architect & Interior Designer  
B. Sankar Rajagopalan  
Phone: 9711 481777, 011 9621114



Residence for Shri Morari ji at Gwalior

Design Atrium  
Architect & Interior Designer  
B. Sankar Rajagopalan  
Phone: 9711 481777, 011 9621114



## OUR DESIGN ASSOCIATIONS

---

**Design Atrium**  
by **Architect Aslam Khan,**  
**Architecture & interior design collaboration.**



Specialist interior design support for hospitality, corporate and high-end residential and commercial spaces.

## RMC PARTNERS

- **ACC Cement Ltd.** – Leading cement manufacturer supporting our projects with consistent quality and dependable supply.
- **JK Laxmi Cement** – Trusted cement brand ensuring strength, durability, and reliability across construction applications.
- **Prism Cement** – Quality-driven cement partner catering to structural and infrastructure requirements.
- **Hella Infra Market** – Tech-enabled construction materials and RMC supply partner, supporting bulk procurement and logistics.
- **Nandora RMC** – Reliable Ready Mix Concrete partner for timely delivery and on-site project requirements.
- **CMIX RMC** – Ready Mix Concrete supply partner for our ongoing and upcoming projects.

## STEEL PARTNERS

- **Jindal Steel** – Premium steel manufacturer ensuring superior strength and structural integrity.
- **Goel Steel** – Reliable steel supply partner supporting diverse construction needs.
- **Moira Steel** – Quality steel partner delivering consistency and performance.
- **Sangam Steel** – Trusted steel supply partner supporting structural and reinforcement requirements.

## GROUTING & ROCK ANCHORING PARTNER

- **Hilti** – Specialist grouting and rock anchoring solutions partner, delivering advanced fastening systems, anchoring technology, and high-performance construction solutions.



## POST—TENSIONING & COUPLER PARTNER

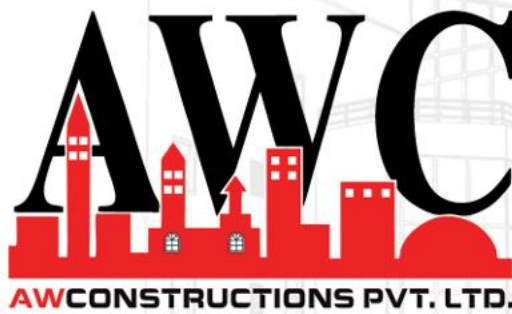
- **Sanfield India** – Specialist PT solutions partner for post-tensioned slabs, couplers, and advanced structural systems, from design to execution.

## **OUR VALUABLE CLIENTS:**

- Technotask Business Solutions Pvt. Ltd.
- Sayaji Hotels Ltd.
- Azim Premji University
- Primarc Projects Realty Pvt. Ltd.
- Navrro Group
- Splash India Pvt. Ltd.
- EKSPE Software Services LLP
- NRI Group of Institutions
- Ajwaa Restaurant & Luxurious Farms



**CONTACT US**



**AWCONSTRUCTIONS PVT. LTD.**  
**COMPLETE DESIGN AND BUILD SOLUTION**

**☎ 9630303786 | 9993338877**

**📍 1809, Shrishti C.B.D, World One Tower, South IT Nagar, Bhopal, 462003**

**🌐 [www.awcgroup.in](http://www.awcgroup.in) ✉ [awconstruction03@gmail.com](mailto:awconstruction03@gmail.com) 📱 [aw\\_construction\\_pvt\\_ltd](https://www.facebook.com/aw_construction_pvt_ltd)**